

Interactive Charting for iOS SDK

Configuration Guide

Document Revision 2.0 / June 26th, 2015

Summary

This document describes the various properties that control the look and feel of the chart view that is presented by the LiveCharts SDK.

In this document a visual will be used to identify the properties location on the chart. There are many properties that are just color settings on chart lines for indicators. In this case the property will be just listed and you can apply the following rules.

Colors:

- Colors can be any RGB value with an Alpha channel if desired.

Fonts:

- Fonts can be any font that is available in the system or available in the app bundle. Font sizes need to be reasonable for any given area. Currently the SDK does not try to resize the various components of a chart to accommodate extremely large or small fonts.

Custom buttons

- All buttons support the use of custom images but they must be the size specified in this document. This restriction will be removed in a future version of the SDK. For chat indicators the colors that appear at the top of the button can also be customized.

Upper & Lower Charts

Currently it is possible to have a chart that is any reasonable size, with just an upper chart or upper and a lower chart. Developers can use the proper initializer to specify what chart sizes appear.

It is also possible to set a symbol at startup as well as the duration.

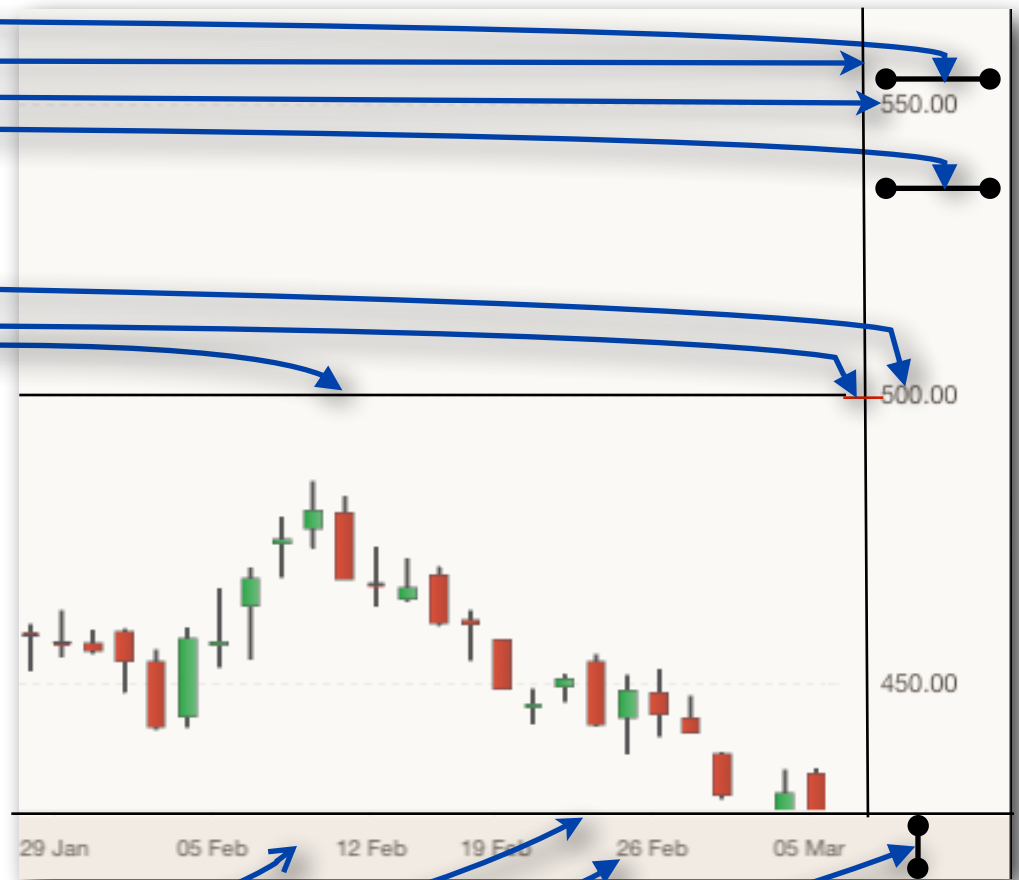
Popovers are also configurable with background colors and fonts. As of this writing the text itself for indicator descriptions is not updatable but will be in a coming update.

There are some properties which are in gray. This means that while the property is there it is not currently used in the implementation.

Upper Chart Axes

colorYAxisUpperBackground
colorYAxisUpperLine
fontUpperYAxisLabel
widthYAxisUpperLine

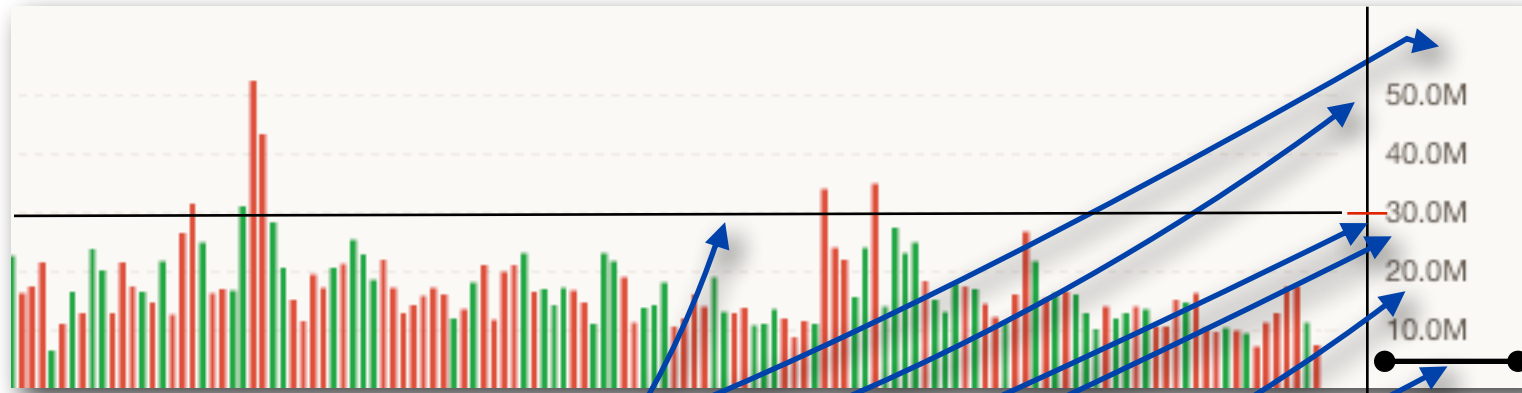
colorUpperMinorTickStyleLabel*
colorUpperMinorTickStyleLine*
colorUpperMajorTickStyleLabel
colorUpperMajorTickStyleLine
colorUpperMajorGridStyleLine
colorUpperTickLabel



colorXAxisUpperBackground
colorXAxisUpperLine
fontUpperXAxisLabel
widthXAxisUpperLine

* Grayed text indicates not supported at this time.

Lower Chart Axis



colorYAxisLowerBackground
colorYAxisLowerLine
colorLowerMajorGridStyleLine
colorLowerMajorTickStyleLine
colorLowerMajorTickStyleLabel
colorLowerTickLabel
fontLowerYAxisLabel
widthYAxisLowerLine

Note: The lower chart does not have an x-axis as it shared it with the upper chart in the current design. The properties are here for completeness but are not used in the current implementation.

colorXAxisLowerBackground
colorXAxisLowerLine
colorLowerMinorTickStyleLabel
colorLowerMinorTickStyleLine
fontLowerXAxisLabel
widthXAxisLowerLine

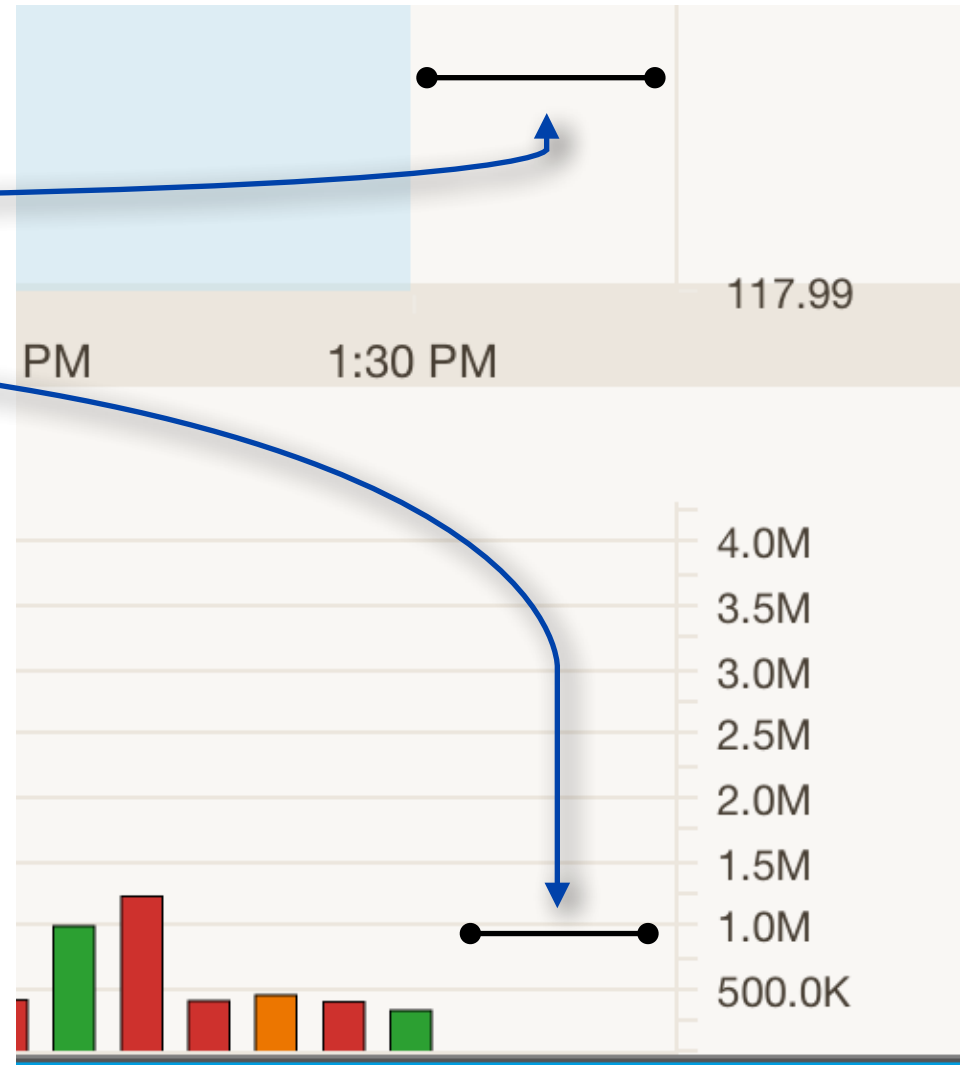
X-Axis Data Insets

upperXAxisLeftDataInsetPercent

upperXAxisRightDataInsetPercent

lowerXAxisLeftDataInsetPercent

lowerXAxisRightDataInsetPercent



X-Axis Tick Labels

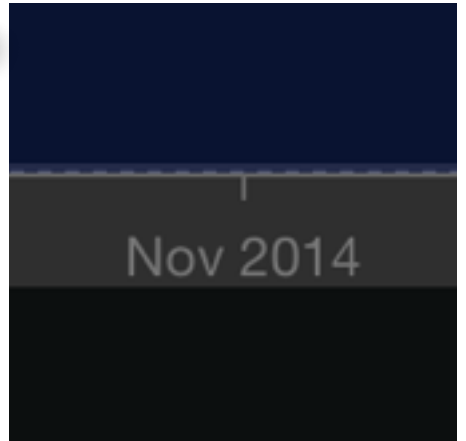
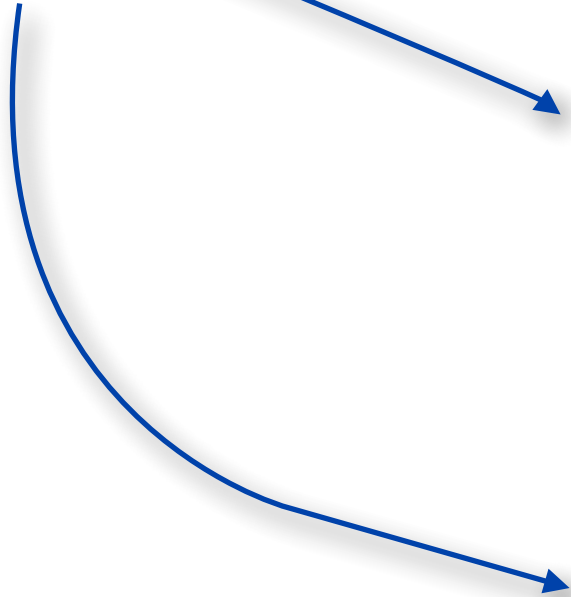
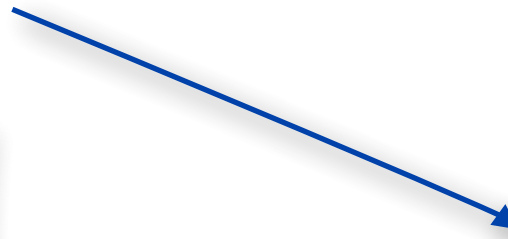
xAxisTickLabelAlignment

```
xAxisTickLabelAlignment = NSTextAlignmentLeft;
```

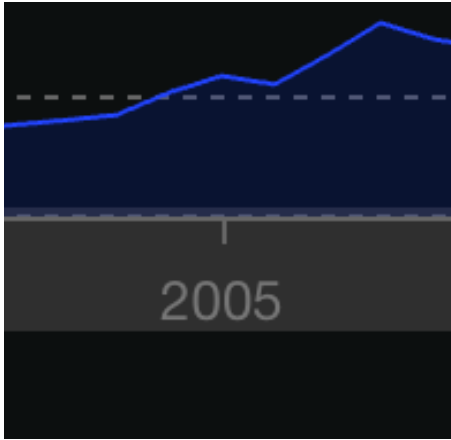
```
xAxisTickLabelAlignment = NSTextAlignmentCenter;
```

```
xAxisTickLabelAlignment = NSTextAlignmentRight;
```

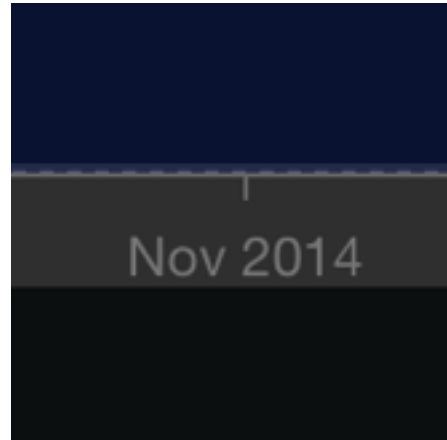
xAxisTickLabelOffset



Custom Timestamps



yearFormat



monthYearFormat



monthDayFormat



hourMinuteFormat



monthDayYearFormat

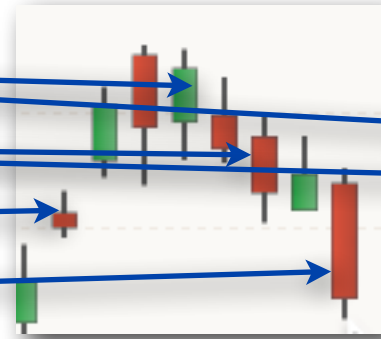
Stock Price Colors

`colorStyleCandlestickRising`

`colorStyleCandlestickFalling`

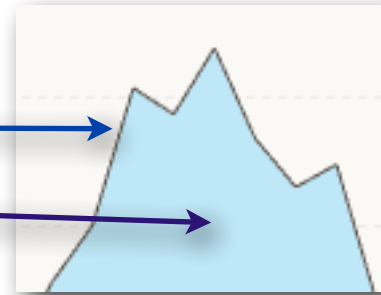
`colorStyleCandlestick`

`colorStyleCandlestickOutline`



`colorStyleMountainLine`

`colorStyleMountainAreaFill`



`colorStyleLine`



`colorStyleBar`



Indicator Legend buttons

The legend buttons that appear for upper and lower indicators can be configured with an image or a background color. If an image is provided it must be 75 x 20 px in size and a highlighted version of that image should be supplied or the non-highlighted image will be used for the highlighted state.

The horizontal line that is used to identify the indicator is added by the SDK and only the color is configurable. The color is set to be the same as specified by the indicators.

If a background image is specified the background color is ignored.

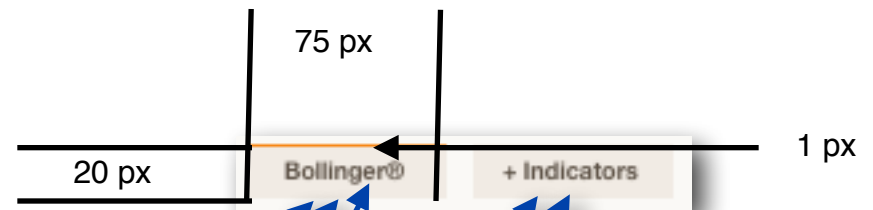
`imageforIndicatorButton`

`imageforIndicatorButtonHighlighted`

`fontIndicatorButton`

`colorIndicatorButtonBackground`

`colorIndicatorButtonHighlightedBackground`



Indicator Info and Parameter Settings

colorIndicatorPopoverBackgroundTop

colorIndicatorPopoverName

fontIndicatorPopoverName

colorIndicatorPopoverUnderline

colorIndicatorPopoverUnderlineShadow

colorIndicatorPopoverDescription

fontIndicatorPopoverDescription

colorIndicatorPopoverParameterLabelText

fontIndicatorPopoverParameterLabelText

colorIndicatorPopoverParameterTextfieldText

fontIndicatorPopoverParameterTextfieldText

colorIndicatorPopoverParameterTextfieldBackground

colorIndicatorPopoverBackgroundBottom

imageIndicatorPopoverRemoveButton

colorIndicatorPopoverRemoveButtonText

fontIndicatorPopoverRemoveButtonText

imageIndicatorPopoverUpdateButton

colorIndicatorPopoverUpdateButtonText

fontIndicatorPopoverUpdateButtonText



Note: `colorIndicatorPopoverBackgroundTop` and `colorIndicatorPopoverBackgroundBottom` represent a gradient fill. If you want a solid background then you set both properties to the same color. Note that `colorIndicatorPopoverBackgroundBottom` also sets the tint color around the popover.

Upper Indicators

Each of these properties allow you to set the colors, the fonts and the strings that will be shown for each of the indicators. Note that you can use any RGB color including alpha channel should that be desired.

colorBollingerLines
colorBollingerFill
bollingerBandsFillEnabled
colorEMAFirst
colorEMASecond
colorEMAThird
colorPrice
colorSMAFirst
colorSMASecond
colorSMAThird
colorTSF
colorPriceChannel
colorMAE
colorWMAFirst
colorWMASecond
colorWMAThird
colorPSAR
colorLinearRegression
colorDividend
colorEarnings
colorSplits
fontDividend
fontEarnings
fontSplits
stringDividend
stringEarnings
stringSplits
colorDividendBackground
colorEarningsBackground
colorSplitsBackground

Lower Indicators

Each of these properties allow you to set the colors, the fonts and the strings that will be shown for each of the indicators. Note that you can use any RGB color including alpha channel should that be desired.

colorVolumeNoChange
colorVolumeUp
colorVolumeDown
colorMACD
colorMACDEMA
colorMACDDivergenceUp
colorMACDDivergenceDown
colorRevenues
colorDividendYield
colorRollingDividend
colorPERangeUpper
colorPERangeLower
colorPERatio
colorRollingEPS
colorMassIndex
colorMassIndexSetup
colorMassIndexTrigger
colorMomentum
colorPriceRateOfChange
colorChaikinsVolatility
colorRelativeStrengthIndex
colorWilliamsPercentR
colorMoneyFlow
colorOnBalanceVolume
colorVolumeRateOfChange
colorStochasticsK
colorStochasticsD
colorUltimateOscillator
colorDirectionalMovementIndex
colorDirectionalMovementIndex_ADX
colorDirectionalMovementIndex_ADXR
colorAccumulationDistribution
colorAccumulationDistributionZeroLine
colorAverageTrueRange